



TANZANIA INVESTMENT AND SPECIAL ECONOMIC
ZONES AUTHORITY (TISEZA)

POTENTIAL LAND FOR INVESTMENT

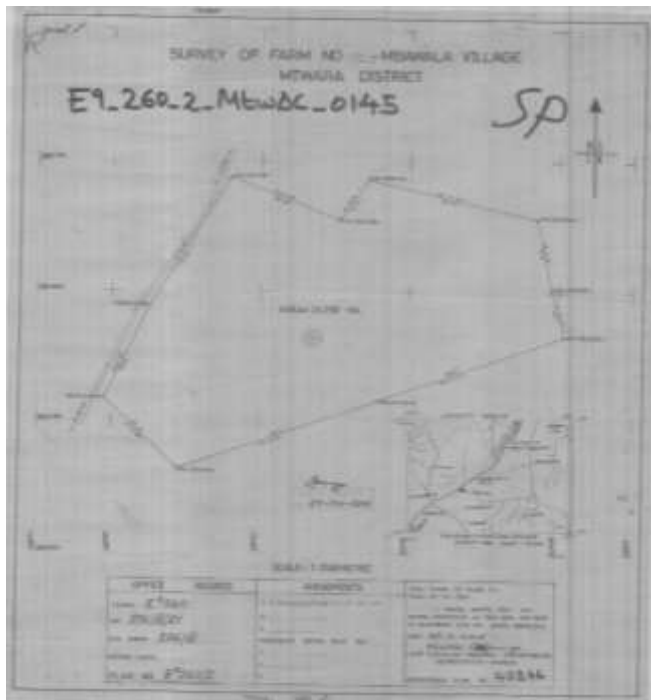
December 2025

Contacts: Gilead Teri,
Director General,
Tanzania Investment and Special Economic Zones Authority (TISEZA),
P.O BOX 938, Dar Es Salaam.
Mob: +255 689222268
Email: gilead.teri@tiseza.go.tz



1. MTWARA FARM

LOCATION	Rudipe Farm No. 359 Mbawala, Mtwara
SIZE	10500 Acres
USAGE	Agriculture, Farming and Livestock
INFRASTRUCTURE	Road, Water, Electricity



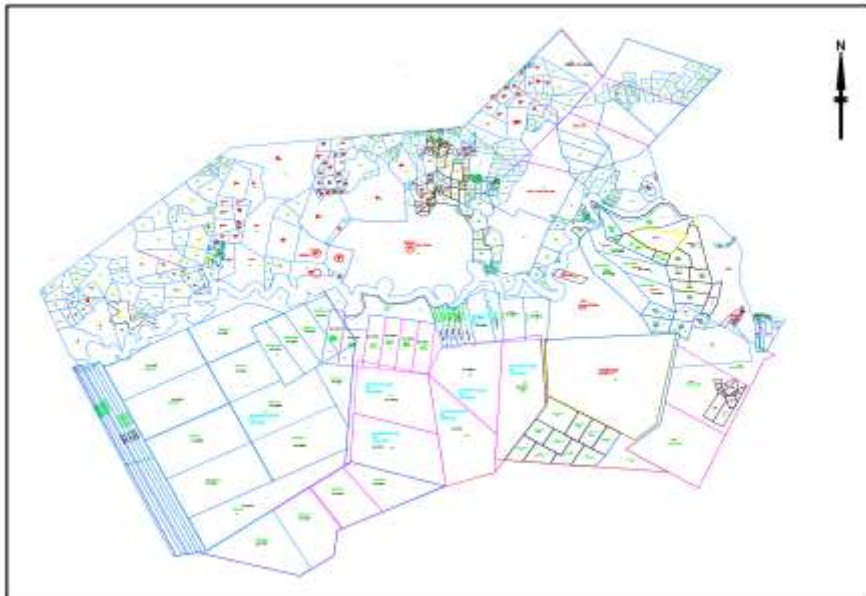
STATION	NORTHINGS	EASTINGS
KEO154	8842534.56	623495.724
KEO155	8844373.07	624002.81
KEO156	8844367.47	625544.005
KEO157	8843444.68	626474.673
KEO158	8842323.65	626841.839
KEO159	8840853.59	630544.251
KEO160	8838915.88	632009.503
KEO162	8837132.881	629040.076
KEO163	8836937.488	627339.378
KEO164	8837814.152	625242.211
KEO165	8839568.187	624026.466
KEO166	8840709.657	622475.098
KEO167	8840979.312	621092.196
KEO168	8841399.245	620999.605
KEO169	8841643.148	621100.638
KEO170	8841792.449	621287.473



2. PANGANI INVESTMENT FARM

LOCATION	Kigurusimba and Mseko Village, Pangani District, Tanga Region
SIZE	21,000 acres
USAGE	Agriculture, Farming and Livestock
INFRASTRUCTURE	Water (The farm is Adjacent to River Pangani), Road Closer to Port of Dar Es Salaam and Kilimanjaro International Airport

MAP SHOWING ACQUIRED LAND OF 28,294 ACRE BY TISEZA FOR SUGAR CANE PLANTATION AT KIGURUSIMBA AND MBEIKO VILLAGE PANGANI DISTRICT - TANGA REGION



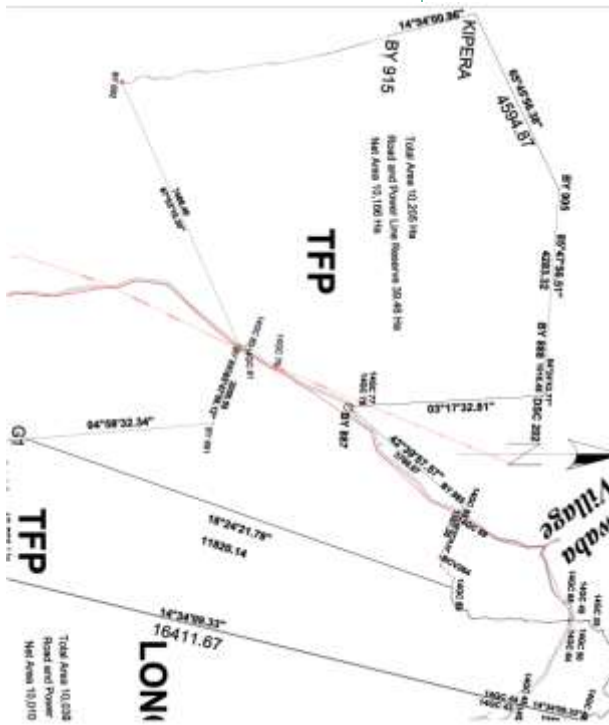
COORDINATES LIST FOR KIGURUSIMBA AND MSEKO

STN	NORTHING	EASTING
PG01	9400928.122	469872.746
PG02	9396807.325	472066.204
PG03	9396272	474213.002
PG04	9398320.07	477639.127
PG05	9398277.12	482684.605
PG06	9401799.655	484579.046
PG07	9402146.989	483518.58
PG08	9403496.723	483498.03
PG09	9404239.974	482929.836
PG10	9404154.09	480856.488
PG11	9402407.055	479745.153
PG12	9401965.037	475033.569
PG13	9402462.222	475059.629
PG14	9402234.717	474220.791
PG15	9402449.099	472923.352
PG16	9402279.635	471102.227
PG17	9403436	469802
PG18	9403628	468893
PG19	9404813	469414
PG20	9406075	472178
PG21	9407145	473165
PG22	9406145.625	477769.31
PG23	9408349.592	479844.102
PG24	9407285.015	480708.357
PG25	9408155.37	481224.64
PG26	9407414.172	483230.087
PG27	9405512.139	481493.971
PG28	9404905.715	480302.422
PG29	9403193.116	479304.11
PG30	9403093.267	478491.805
PG31	9403522.124	477912.271
PG32	9402818.148	477427.89
PG33	9402990.281	476079.33
PG34	9402809.76	475292.96
PG35	9403329.449	474578.702
PG36	9402882.026	472897.33
PG37	9403038.986	472383.08



3. MKULAZI FARM

LOCATION	Ngerengere, Morogoro Region (Written TFP on the Map)
SIZE	10,000 Hectares (Potential to Acquire 10,000 hectares more)
USAGE	Agriculture, Farming and Livestock
INFRASTRUCTURE	Water, Road



1	9226417.326	415740.683	0 DCS202
2	9222695.184	406498.117	0 BY915
3	9226830.077	410457.224	0 BY905
4	9216201.161	407684.928	0 BY892
5	9218419.902	416451.501	0 BY891
6	9219079.799	414535.477	0 BY890
7	9226516.302	414729.037	0 BY888
8	9221714.017	416011.262	0 BY887
9	9224507.968	418586.377	0 BY885
10	9224719.862	420399.003	0 BCV264
11	9213881.597	416846.6079	0 G1
12	9224220.285	420656.463	0 14GC 59
13	9224796.2	405939.111	0 KIPERA



4. BASANZA FARM

LOCATION
SIZE
USAGE
INFRASTRUCTURE

Farms No. 71-74 Besana, Uvinza District - Kigoma

4807.08 Hectares

Agriculture, Farming and Livestock

Water, Road





5. BUNDA AREA

LOCATION	5 Kilometers west of Bunda Town in Guta Ward, Musoma Town in the Mara Region
SIZE	3,173 acres
USAGE	Industrial Area
INFRASTRUCTURE	Roads, Water, Electricity

